

20th

KIDS & FUTURE FOUNDATION
2019 ANNUAL REPORT



Profile

- 2016-Present : Chairman, Kids & Future Foundation
- 2012-Present : Chancellor, CHA University
- 2008-2012 : Representative, One Law Partners
- 2004-2008 : Director, Changwon District Prosecutors' Office
Director, Daejeon District Prosecutors' Office
Director, Incheon District Prosecutors' Office

Message

**Children are our future.
For children to be happy,
your warm support is continuously needed.**

In this year of 2020, Kids & Future Foundation (K&F) is celebrating its meaningful 20th anniversary since its establishment. K&F has thus far earnestly carried out its role as a private independent foundation which supports children in the blind spots of social welfare.

The Foundation was able to successfully continue its systematic and professional welfare projects for a period spanning 20 years, thanks to our sponsoring companies and individual donors who have been all willing to join in our efforts.

As a result, we could grow as one of the most transparent and fair welfare foundations in Korea.

I will actively support K&F, as it marks its 20th anniversary, so that it may exert the capacity built thus far, while doing my very best in envisaging the Foundation's new leap into its third decade.

In recent times, the Korean society is undergoing an increasingly isolated situation with the absence of communication and aggravation of individualistic tendency.

The psychological anxiety resulting from such an environment is rising as a social issue.

In last year's survey of Koreans in their 20s, six out of ten people answered that they feel isolated. The phenomenon of isolation and individualism calls for the need to secure the social safety net.

I would like to take this opportunity to express my wholehearted appreciation for our sponsoring companies and those involved for trusting and supporting our Foundation in spite of such social atmosphere. As in the previous years, our Foundation has made its best efforts to inform through this annual report how our sponsors' valuable support has been materialized, as transparent and as accurate as possible.

Going forward, K&F will strengthen the capacity and expertise of its staff and, as a foundation carrying out tailored social contribution projects, provide quality programs together with partner companies. By doing so, K&F will endeavor to cultivate a society in which children can realize their dreams as well as fulfill corporate social responsibility.

We would like to ask for your continued interest and support for our efforts.

K&F will also vigorously move forward in order to implement transparent, fair, and sustainable welfare projects.

LEE Hoon-kyu
Chairman
Kids & Future Foundation

**A world where children
can dream of the future
let's make it together!**



KIDS & FUTURE FOUNDATION

Our Foundation's accomplishments are truly recognized when we observe our children flourish day by day.

K&F Overview

Name : Kids & Future Foundation

Location : 5F Sam-bo B/D, 272, Sadang-ro, Dongjak-gu, Seoul, Korea

Permitted by : Korean Ministry of Health and Welfare, License No. 832

Corporation Type : Social Welfare Corporation

Applicable Statute: Article 16 of Social Welfare Service Act

Target Audience : Social welfare facilities and personnel of children and youth-related work; neglected children and youth

Date of Establishment : March 28, 2000

Contribution Deduction : Designated donations (in accordance with Paragraph 1, Article 34, Income Tax Act); relevant organizations and individuals: 30%; corporations: 10%

Mission & Vision



MISSION

We aim at providing children and youth ample opportunities to play, learn, and have diverse experiences in a healthy and stable environment.



VISION

K&F pursues a society where every child and youth can dream of a bright and healthy future.

Core Values



Creativity

We are open and flexible; we are not afraid of making changes for a better and happier world for children.



Trust

Through our financial transparency, we build trust with our partner organizations and donors. Our mutual respect is based on integrity and trust, through which we gather our ideas.



Passion

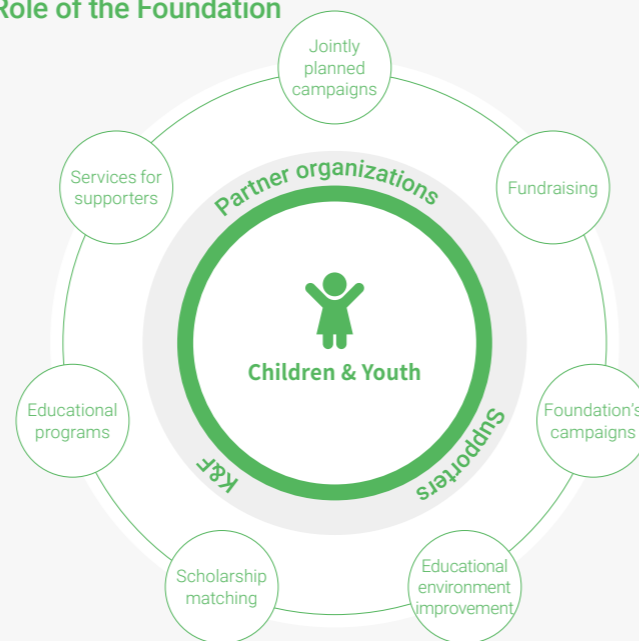
We make dedicated efforts based on our incessant passion for children's bright future.



Creativity

We have no hesitation in stepping up to challenges, planning, and taking action accordingly if we find something of value to the youth we serve.

Role of the Foundation



Foundation Business Impact

Charting Impact : Foundation Business Impact



1. What is the goal pursued by K&F?

We discover children and youth's innate talent, interests, and passion, while teaching them how to combine new knowledge with critical and creative thinking skills to ultimately discover, understand, and create new things.

2. What is the strategy of K&F to achieve that goal?

We provide physical and digital learning space for children with differentiated content based on various academic disciplines. We help children connect creative projects with their daily lives so that they can contribute to making a change in their community and take the initiative in creating their own future.

3. What is the capability of K&F for achieving that goal?

By forging cooperative relations with corporations which are the agents of innovation, the Foundation is conducting social contribution projects with various domestic and overseas companies to solve social issues. The value of social contribution and its impact are shared with citizens as well.

To date, K&F is equipped with the experience of implementing approximately 100 education projects through its cooperation with 80 corporations as well as know-how in the education welfare area. In the past 20 years, the Foundation has cooperated with social welfare institutions, non-profit organizations, schools, and public institutions throughout the nation, through which it has built trust and secured various channels. (2020)

4. How is K&F measuring project outcomes?

Through internal outcome management and external assessment, we are measuring project efficiency and financial transparency and soundness.

Moreover, we are regularly reporting our annual report, external audit report, and impact outcomes to our individual donors, corporate sponsors, and relevant organizations as well as receiving corresponding feedback.

5. What are the outcomes of K&F so far and what outcomes need to be achieved?

We have used our cumulative donation for children and youth, establishing the Foundation as the most trusted of its kind by companies, organization, and beneficiaries.

The Foundation is making continued efforts to grasp the opportunity to make an innovative change in the current public and private education system.

20th Anniversary, Kids & Future Foundation

Kids & Future Foundation, a social welfare corporation, was established in March 2000 based on the funds from venture companies. The goal of the Foundation in its early stage was to conduct non-conventional, creative support projects based on the spirit of entrepreneurship. In the past 20 years, we have diverted from providing charity-based welfare service focused on the provision of necessities such as food, clothing, and shelter. Instead, we have concerted our efforts in cultivating future talent by providing children and youth the opportunity for education, culture, and arts. This year of 2020, on its 20th anniversary, K&F has established a status as the foundation for children and youth as well as the one most trusted by various stakeholders including companies, organizations, and beneficiaries.



20th Anniversary Congratulatory Message



international youth foundation  Susan Reichle
(IYF President & CEO)

Congratulatory Message (IYF)

Partnership means everything to the International Youth Foundation.

Only through partnerships with local, national and regional organizations and our global network of corporate, foundation, and multilateral donors are we able to connect young people with opportunities to transform their lives. Since 2001, IYF and the Kids & Future Foundation have partnered to bring scale and on-the-ground impact to youth-serving initiatives in Korea.

In delivering programs funded by Nokia, Alcatel-Lucent Foundation, Visteon and the Tiger Woods Foundation, we are consistently reminded that at the core of our partnership is a shared vision.

At IYF, our vision is “to see young people inspired and equipped to realize the future they want.” At the Kids & Future Foundation, it is “to see a world where every youth can realize their dreams of a better, brighter future.” Clearly, we are working toward the same goal—shoulder to shoulder and hand in hand. That’s what has made IYF’s partnership with the Kids & Future Foundation so rewarding.

We congratulate the Kids & Future Foundation on its 20th anniversary and look forward to continuing our partnership—and the pursuit of our shared vision—for years to come.

IYF & Kids & Future Foundation

Founded in 1989, the International Youth Foundation (IYF) has been providing youth opportunities to change their lives and leading various relevant projects. IYF has also been cooperating with corporate partners, educational institutions, and youth volunteer groups across the globe to support them achieve their goals. K&F is IYF’s only global partner in Korea as one of IYF’s 70 partners worldwide. Since 2002, K&F and IYF have been forming a close cooperative relationship.



The founding ceremony of a corporation (2000)



hold opening ceremony (2020)

HISTORY

2000

- Establishment; Foundation Ceremony
- First project: 2000 Sharing & Support Project

2002

- Became the Korean partner of IYF (International Youth Foundation)
- IYF Youth Informatization Support Project

2003

- Make a Connection Workshop (NOKIA)

2004

- Certification of IYF Global Partner Assessment

2005

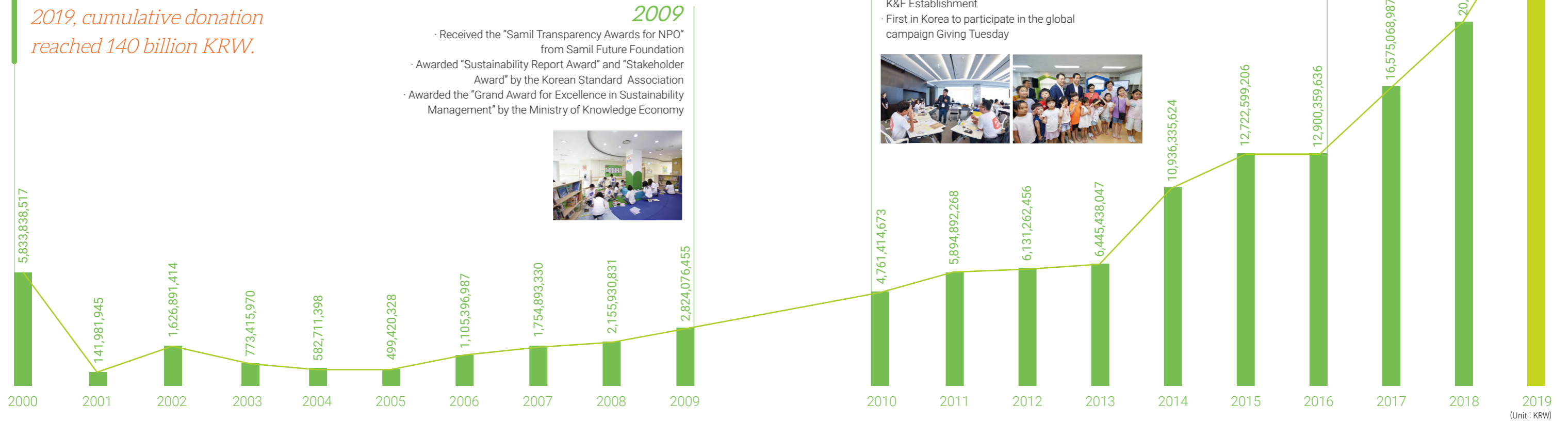
- Concluded agreement with Samsung Securities for "Youth Economic Class Project"



Cumulative donation in 2000-2019

143,468,555,635 KRW

2019, cumulative donation reached 140 billion KRW.

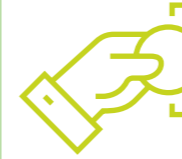


- ## 2009
- Received the "Samil Transparency Awards for NPO" from Samil Future Foundation
 - Awarded "Sustainability Report Award" and "Stakeholder Award" by the Korean Standard Association
 - Awarded the "Grand Award for Excellence in Sustainability Management" by the Ministry of Knowledge Economy



29,415,432,896 KRW

Donations in 2019 (excluding other revenue)



2010

- Received the award given by the chairman of the National Assembly's Education, Science and Technology Committee at the "2010 Korea Sharing Awards"
- Concluded agreement with Shinhan Card for Arumin Library

2014

- Concluded agreement with Mercedes-Benz Korea for the <Mercedes-Benz Promise project>
- Concluded agreement with Hyundai E&C for the <Hillstate Kiwoom Volunteer Service Group>
- Signed MOU with Malawi Salima Education Office, FC Malawi

2015

- Commemoration of 15th Anniversary of K&F Establishment
- First in Korea to participate in the global campaign Giving Tuesday



2016

- MBC and Good Friends Broadcasting of <FC Malawi Project>
- Inauguration of 3rd Chairman, Mr. Hun-kyu Lee

2017

- 1st GIVE 'N RACE Marathon with Mercedes-Benz

2018

- Parents' Guide Panel Discussion by Facebook Korea and K&F
- Opening ceremony of the 1st Dream Dodamteo, a daycare center for elementary school students by Shinhan Finance Hope Foundation



2019

- Received award of excellence for program by the "2019 Seoul Social Contribution Award"
- Received Presidential Citation for Shinhan Card Arumin Library at the "2019 25th Reading Culture Award"

Organization

Board of Directors

(Directors: 8 / Auditors: 2)

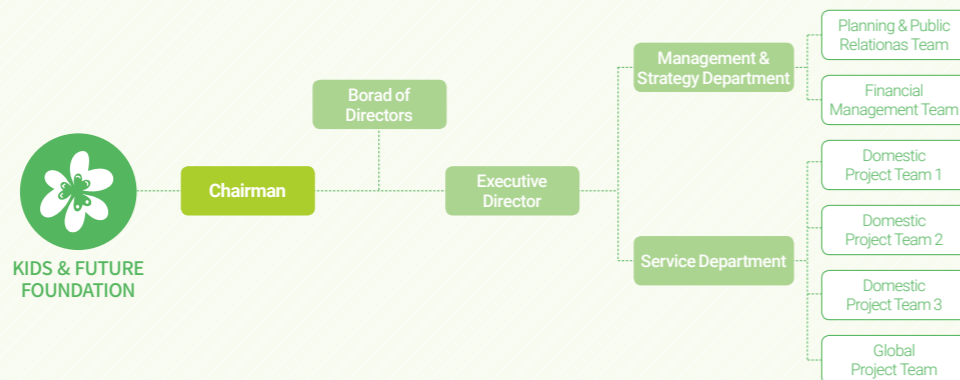
Position	Name	Previous & Current Affiliations	Term
Chairperson	LEE Hun-kyu	Present: Chairman, K&F Present: President, CHA University Previous: Director, Incheon District Prosecutors' Office	Mar. 17, 2019– Mar. 16, 2022
Director	AHN Seo-gyu	Present: Professor Emeritus, School of Management, Kyung Hee University	July 16, 2019– July 15, 2022
	JIN Hyung-hye	Present: Lawyer, GL Law Firm	July 16, 2019– July 15, 2022
	JANG Tae-shin	Previous: Ambassador to Greece	June 28, 2019– June 27, 2022
	KIM Chi-jung	Present: Representative, Oracle Law Firm Previous: Chief Prosecuting Attorney, Seoul High Court	Jan. 20, 2020– Jan. 19, 2023
	SHIN Eun-kyung	Present: Professor, CHA University Previous: Korea Youth Work Agency, Chairperson	Apr. 26, 2018– Apr. 25, 2021
	SEOL Jung-seon	Present: Lawyer, Lee & Ko Previous: Director of Information and Communication Cooperation Policy Division, Ministry of Information and Communication	Aug. 01, 2019– July 31, 2022
Executive Director	PARK Du-jun	Present: Executive Director, K&F Present: Research Committee Member, GuideStar Korea	May 22, 2018– May 21, 2021
Auditor	KWON Jun-yeop	Present: Certified Accountant, Seyeon CPA Previous: Certified Accountant, Anjin Accounting Firm	April 26, 2020– April 25, 2022
	LEE Joo-hye	Present: auditor, Shin Bo Previous: auditor, Sham Jung	Dec. 03, 2019– Dec. 02, 2021

(As of Mar. 31, 2020)

Board Activities

Category	2015	2016	2017	2018	2019
Board of Directors No. of Meetings	2	4	2	3	3
Average Meeting Participation Rate	75	65	70	69	83
No. of Items for Review	5	13	4	10	15

Organizational Chart



Certifications & Awards Received

K&F Program Awards Received

CSR in the Community 2019

As a system which started in 2019, continuous social contribution will be made with partnerships with non-profit organizations in the local community. Proceeded to recognize and encourage the hard work of companies and public institutions which took part. Selected at the event "The Day of Recognition of Community Social Contribution."

Award Received: CSR in the Community
Date of Award: Dec. 03, 2019
Host: Ministry of Health and Welfare, Korea National Council on Social Welfare



2019 Seoul Social Contribution Award

Held since 2017 by the Seoul Metropolitan Government and Seoul Welfare Foundation to support social contribution partnerships of partner organizations such as companies and welfare facilities.

Award Received: Excellent Program
Date of Award: Nov. 15, 2019
Host: Seoul Welfare Foundation



Received Presidential Citation for Shinhan Card Arumin Library at the "2019 25th Reading Culture Award"

Held to find and award individuals and organizations that have contributed to promoting the reading culture. K&F was awarded the Presidential Citation in recognition of the Foundation's promotion of the reading culture by operating the Shinhan Card Arumin Library for the past 10 years.

Award Received: Presidential Citation
Date of Award: Aug. 31, 2019
Organizer: Ministry of Culture, Sports and Tourism
Host: Publication Industry Promotion Agency Of Korea



2014 Samsung Social Contribution Award

Aims to award organizations and individuals that have contributed to local community development and a warmhearted corporate culture.

Award Received: Social Contribution Partner Award
Date of Award: Nov. 20, 2014
Host: Samsung Social Volunteer Group



2010 Economic Education Grand Award

Held to commend organizations and individuals devoted to economic education area and to vitalize economic education.

Award Received: Best Practices of Economic Education (4th place in 'General Area')
Date of Award: Jan. 21, 2011
Host: Korea Association of Economic Education



K&F Certifications & Awards Received

Certified by GuideStar Korea for highest transparency for "four consecutive years"

Certified Areas: Perfect scores for Financial Stability / Efficiency / Accountability / Transparency
Certified Year: 2016-2019
Host: GuideStar



Grand Award for Sharing Received

An award given to individuals who have carried out sharing and volunteer activities while earnestly assuming their respective social duties for the nation and the local community. To find such awardees, the National Assembly, political parties, media, and civic groups come together and they altogether try to spread the culture of sharing through the media.

Award Received: The Presidential Award for Education, Science & Technology
Date of Award: May 7, 2010
Host: Nanum News



Grand Awards for Excellence in Sustainability Management

According to Article 19, Section 3 of the Industrial Development Act, the award is given to facilitate companies' autonomous sustainable management. It aims to enhance domestic awareness of sustainable management by discovering and awarding best practices, there by motivating companies to actively carry out sustainable management activities.

Award Received: Social Responsibility Management Award (first NPO to be awarded)
Date of Award: Nov. 4, 2009
Host: Ministry of Knowledge Economy



Sustainability Report Award Received

As an award given by the Korean Standards Association with the cooperation of the GRI, which sets the guideline for a global 'Sustainability Report' of corporations, various stakeholders assess the report through online participation. The award aims to offer feedback for improvement for domestic reports and to contribute to their distribution and proliferation. Award Received: Stakeholder Area (first NPO to be awarded)

Date of Award: Oct. 14, 2009
Award Received: Excellent Report Award in the Public/NGO area
Date of Award: Nov. 16, 2010
Host: Korean Standards Association



Recipient of the Best Prize for the Samil Transparency Award

An award for NPOs given by Samil Accounting Firm and Samil Future Foundation through an objective evaluation of the organization's transparency in accountability and outcomes, with an aim to spread a donation culture based on trust.

Award Received: Best Prize
Date of Award: January 2009
Host: Samil Future Foundation



International Youth Foundation (IYF) Certification for Global Partner

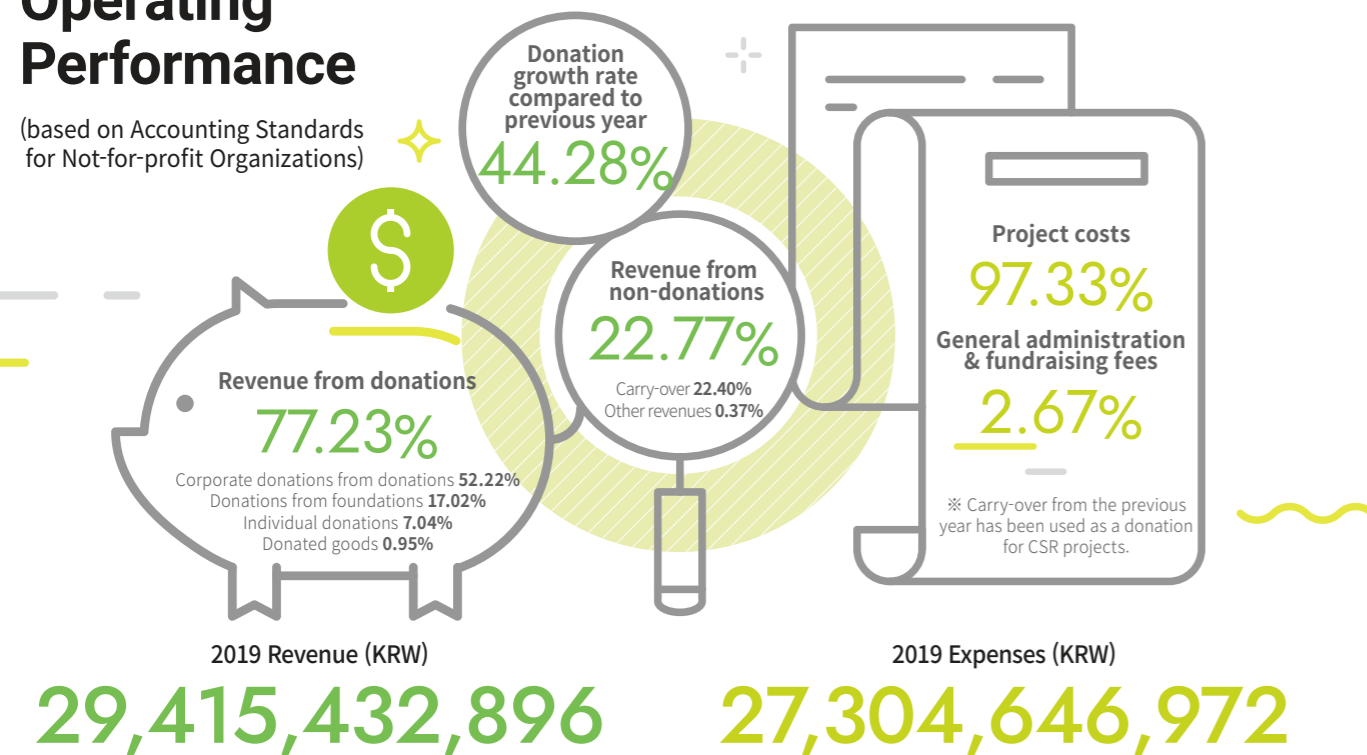
K&F received a Certification of Excellence from the IYF and is the IYF's only global partner in Korea. This certification was based on 13 indices designated by the IYF used to evaluate each organization's management methods and effectiveness of strategies; indices evaluated for influence on youth were independence, objectivity, transparency, effectiveness, and continuity.

Award Received: Excellence
Date of Award: 2004
Host: International Youth Foundation (based in the U.S.)



2019 Foundation Operating Performance

(based on Accounting Standards for Not-for-profit Organizations)



K&F's Revenue (past 3 years)

Category	2017	2018	2019
Corporate donations from donations	12,232,442,403	12,592,301,846	19,889,964,713
Donations from foundations	1,784,186,955	5,167,610,558	6,482,017,976
Individual donations	2,205,036,067	2,178,171,835	2,680,055,445
Donated goods	353,403,562	449,110,428	363,394,762
Subtotal (Donation income)	16,575,068,987	20,387,194,667	29,415,432,896
Other revenues	137,527,357	157,241,253	140,461,582
Subtotal (Other revenues)	16,712,596,344	20,544,435,920	29,555,894,478
Carry-over from previous year	7,063,503,827	9,227,253,305	8,529,367,717
Total	23,776,100,171	29,771,689,225	38,085,262,195

(Unit: KRW)

K&F's Expenses (past 3 years)

Category	2017	2018	2019
Project costs	13,972,425,016	20,654,403,659	26,575,086,958
General administration & fundraising fees	513,963,600	670,509,766	729,560,014
Subtotal	14,486,388,616	21,324,913,425	27,304,646,972
Carry-over to following year	9,227,253,305	8,529,367,717	10,580,078,836

(Unit: KRW)

Composition of K&F staff personnel expenses

Project staff	Fundraising staf	Management staff	Total
1,471,075,680	140,779,545	310,377,041	1,922,232,266
77%	7%	16%	100%

(Unit: KRW)

Execution cost details for 2019

(Unit: KRW)

	Distribution H	Human resources	Facility	Others	Total	Proportion
Project implementation	7,272,896,481	1,471,075,680	132,614,126	17,698,500,671	26,575,086,958	97.33%
General management	-	310,377,041	21,764,914	128,562,268	460,704,223	1.69%
Expenses	-	140,779,545	11,135,537	116,940,709	268,855,791	0.98%
Total	7,272,896,481	1,922,232,266	165,514,577	17,944,003,648	27,304,646,972	100%

Top 8 major corporate donors of designated donations in 2019

(Unit: KRW)

Corporate donor	Amount	Note
Mercedes-Benz and Retailers	4,896,085,628	MB Social Contribution; 3 projects (Mobile Kids, industry-academic cooperation, All Together)
Kangwon Land	3,060,000,000	High1 Scholarship Program, High1 Dream Expedition
Shinhan Financial Group Hope Foundation	3,007,785,660	Shinhan Dream Dodamteo
Samsung C&T	1,780,000,000	Junior Construction Academy
Samsung Securities	1,644,000,000	Samsung Securities, Future Scholarship Program
KB Financial Group / KB Bank	1,480,000,000	Rainbow Love Camp, Youth Music Academy / KB! university student volunteer group, mentors for youth
Emart	939,416,400	Emart Kids Library (Andong), Emart Kids Library (Company), Emart "DAIZ one for one", Donation Campaign
Shinhan Card	898,651,368	Arumin Library(Donation Campaign)
Total	17,705,939,056	

* Sixty percent of total donations / which is individual donations (donations by executives & staff) has been excluded.

Detailed status of project necessary expenses in 2019

(Unit: KRW)

Category	Total (100%)	Project costs (97.33%)	General administration (1.69%)	Fundraising fees (0.98%)
1. Purpose Project Expenditure	24,971,397,152	24,971,397,152	-	-
1) Interational	24,431,056,699	24,431,056,699	-	-
2) External	540,340,453	540,340,453	-	-
2. Payroll costs	1,576,599,892	1,193,120,922	273,268,070	110,210,900
3. Severance payment	128,184,632	109,611,221	2,981,641	15,591,770
4. Social Insurance Contribution	132,283,580	100,108,030	22,928,375	9,247,175
5. Welfare benefit	70,370,042	56,382,114	9,253,552	4,734,376
6. Business promotion expenses	22,223,280	-	22,223,280	-
7. Fund-raising expenses	116,940,709	-	-	116,940,709
8. Meeting costs	10,239,626	-	10,239,626	-
9. Travel and transportation expenses	11,365,502	-	11,365,502	-
10. Communication expense	9,337,670	-	9,337,670	-
11. Rent, hire (that one pays)	132,748,000	106,360,783	17,456,159	8,931,058
12. Tax and public imposts	1,294,009	202,357	1,074,660	16,992
13. Repairing expenses	8,486,300	6,799,421	1,115,935	570,944
14. Insurance	342,200	-	342,200	-
15. Vehicle maintenance cost	350,650	280,949	46,110	23,591
16. Education and training cost	14,794,120	11,853,393	1,945,403	995,324
17. Book purchase and printing cost	3,151,250	-	3,151,250	-
18. Office supply cost	6,308,317	-	6,308,317	-
19. Commission fee	63,054,734	-	63,054,734	-
20. Outside order expenses	1,498,240	-	1,498,240	-
21. Depreciation cost	14,255,347	11,421,715	1,874,556	959,075
22. Amortization of intangible asset	9,421,720	7,548,901	1,238,942	633,877
Total	27,304,646,972	26,575,086,958	460,704,223	268,855,791

2019 OVERVIEW



1 JANUARY

- 2 Signed Oh-jun Kwon's automobile support project of "Fruit of Love" by Community Chest of Korea
- 4 Orientation for university student mentors of Hanmaum Math Mentor School
- 16 Mentoring contest of Samsung Card Open Proposal, Season 21
- 20 Mercedes-Benz Mobile Academy's fall semester study tour to Germany (-26th)
- 23 Samsung Electronics R&D Dream Design School Exhibition
- 31 Opening of Emart Andong Kids' Library

2 FEBRUARY

- 13 Culture sharing by Lotte Cultureworks
- Opening ceremony of the 10th YAHU Youth Economics Class (-14th)
- 14 First half training of teachers & lecturers of Samsung C&T Junior Trading Academy (-20th)
- 18 Opening ceremony for 21st KBI university student volunteer group, mentors for youth (-19th)
- 20 Closing ceremony for 20th KBI university student volunteer group, mentors for youth MOU with Seoul National University Hospital
- Camp for scholarship recipients of Samsung Fire & Marine Insurance scholarship support project for children of victims of traffic accidents (-22nd)
- 21 Window Camp for the Search of My Dreams site visit to the Netherlands (-28th)
- 23 Sharing Concert by the Sound of Light Fund for Hope
- 25 Opening ceremony for Paul Janssen University Mentors
- Executives & staff volunteer activity for the new semester sports day of Mercedes-Benz All Together
- 27 Opening ceremony for Shinhan Card Arumin Library Book Mentors
- Completion and closing ceremonies and experience of Kolon Multicultural Mentoring "Catch Your Dream JOB" (-28th)
- 28 Opening ceremony of Samsung Card Golden Bell Study Group

3 MARCH

- 1 Dispatch of World Friends volunteer staff to Malawi (1 year)
- 3 FC Chokokoto player Isha selected as Malawi's national women's team
- 6 Opening ceremony for LG CNS university student supporters & editors
- 7 Opening ceremony for university student mentors of Samsung Fire & Marine Insurance Ggumteo Study Center
- 8 Carried out SERI (Samsung Economic

- 9 Research Institute) CSR Workshop
- Opening ceremony for university student supporters of the 1-Day Donation Campaign
- Workshop for university student mentors of Hanmaum Math Mentor School (-10th)
- 15 Opening ceremony for 3rd team of university student supporters of Lotte Cultureworks
- 16 Mural painting volunteer activity by executives & staff at Samsung Life Insurance
- Joint activity of Hyundai E&C Dream Growth mentoring
- 22 Award ceremony for C.J Hello Genius Scholarship Award
- 23 Opening ceremony for supporters of Samsung C&T Junior Construction Academy
- 25 Delivery ceremony of Mercedes-Benz All Together automobile support project for social welfare cor-poration

4 APRIL

- 4 Lotte Cultureworks Star Chair (Woo-sung Jung)
- 13 Carried out workshop for lecturers of Korean-English Agzak Class
- 15 Published the 2018 K&F Annual Report
- 24 Samsung Electronics (Hwaseong) semi-conductor science class (-25th)
- 27 Samsung Life Insurance EVP farming village activity
- Embarked on Amore Pacific Primera project supporting mango tree planting in Jamui, northern In-dia

5 MAY

- 2 Concluded MOU with Samsung Electronics (Hwaseong, Pyeongtaek) semi-conductor science class (2nd, 9th)
- 5 Hyundai Mobis children's archery class event for Children's Day
- 7 Opening ceremony for the 29th Dream Playground (Seoul Songlim Children's Park)
- 9 Lotte Cultureworks Star Chair (Hye-ja Kim)
- Mercedes-Benz mobile kids traffic safety campaign for children, "Play the Safety" (-11th)
- Free Semester Program for Samsung Electronics R&D app development mentoring
- 11 Joint enrollment ceremony of Adidas My Dream FC (Adidas Headquarters)
- 17 Award ceremony and cultural experience activities of Samsung Securities Future Scholarship Fund
- 18 Held volunteer activity event (creating school classroom forest) for Youth Economics Class

- 20 Mercedes-Benz GIVE 'N' DRIVE campaign for spreading donation culture
- 25 Joint event of Samsung C&T Junior Construction Academy
- 26 Mercedes-Benz GIVE 'N' RACE campaign for spreading donation culture
- 30 Samsung Card Open Sharing Season 22 (History) X Fundraising
- 31 Selected two schools in Malawi for building "Let's Go to School" classrooms

6 JUNE

- 10 Completion Ceremony of P&F Family Care Campaign
- 11 Makers' Festival of Samsung C&T Junior Trading Academy (-28th)
- 14 Lotte Cultureworks Star Chair (In-seong Jo)
- 17 Opening ceremony of Shinhan Card Arumin Library (Gwangju) (17th, 27th)
- 20 Opening ceremony of Samsung Fire & Marine Insurance Dream Playground
- 21 Opening ceremony of Samsung Life Insurance joint childcare center (Changwon, Sacheon)
- 22 Archery class event with Hyundai Mobis in Yongin
- 26 Exhibition of award-winning works for Mercedes-Benz mobile kids "Play the Safety" campaign
- Opening ceremony of Samsung Life Insurance joint childcare center
- 27 5th anniversary ceremony of Mercedes-Benz social contribution
- Opening ceremony of Shinhan Card Arumin Library (two sites in military base)
- 29 Closing ceremony of Kolon Multicultural & Immigration Didimdol Mentoring
- KB Rainbow Love Camp cultural experience

7 JULY

- 4 Training of mentors of Samsung C&T Junior Trading Academy (-5th)
- 1-day Camp Challenge of Hyundai Kefico Junior Smart Car Engineering Class (Gunpo Middle School)
- 5 Camp for the selection of mentees for Kangwon Land High1 Dream Expedition (7th)
- 6 Lotte Cultureworks Star Chair (Gyung-gu Seol)
- 11 Opening ceremony for Hyundai AutoEver university student volunteer group (-12th)
- 16 Opening ceremony for the 31st Dream Playground (Daejeon Christian Welfare Center)
- 17 FC OK owner Oh-yong Kwon's visit to Malawi site (-22nd)
- 18 Operated open courses of Samsung C&T Junior Construction Academy (-Aug. 2)
- 19 Opening ceremony and Dream Camp of

- Kangwon Land High1 Dream Expedition (-23rd)
- Eyeglasses support event of "Happy Eye Campaign"
- 23 Samsung Card History Education (The Forgotten Heroes)
- 24 Moviemaking Experience Camp by Lotte Cultureworks (-26th)
- Advanced camp of Samsung C&T Junior Trading Academy (-26th)
- 26 Proceeded collaboration for Army X HoE Malawi Teacher Training (-Aug. 4)
- 29 Opening ceremony of Shinhan Dream Dodamteo X Arumin Library collaboration (Sokcho, Gangwon-do)

8 AUGUST

- 7 KB Rainbow Love Camp job experience event
- 8 Second half training of teachers & lecturers of Samsung C&T Junior Construction Academy (-12th)
- 12 Change-makers' Camp of Kangwon Land High1 Dream Expedition (-13th)
- Summer camp of Samsung Electronics R&D app development mentoring
- 14 Plenary event for Paul Janssen Scholarship Fund
- Opening ceremony of Shinhan Card Arumin Library (Ewha Womans University Medical Center)
- 15 History golden bell event of Samsung Card "The Forgotten Heroes"
- 21 Kangwon Land High1 Dream Expedition high school students' trip to the US (-Sep. 6)
- 22 Lecturer cultivation training for Samsung SDS Coding Campus
- 23 Started construction of Mikute and Pemba Elementary schools in Salima, Malawi
- 27 Opening ceremony of Shinhan Card Arumin Library (Bucheon)
- 29 Scholarship project signing ceremony with SGI Youth Hope Partner
- Completion ceremony for the 8th Shinhan Card Book Mentor Volunteer Group
- 30 Opening ceremony of Shinhan Card Arumin Library (Busan)
- 31 Shinhan Card received Presidential Citation for the 25th Reading Culture Awards

9 SEPTEMBER

- 1 Started the Malawi project of Samsung Dream Scholarship Foundation's overseas scholarship project
- 3 Dispatch of World Friends volunteer staff to Malawi (6 months)
- 5 500th opening of Shinhan Card Arumin Library
- 7 Lotte Cultureworks Star Chair (Young-ae Lee)
- 10 Opening ceremony of Shinhan Card Arumin Library (Busan)
- 17 Opening ceremony for university student mentors of SGI Youth Hope Partner Scholarship Fund
- 20 Opening ceremony for Hyundai E&C dream growth university student volunteer group (-22nd)
- Start of 7th FC Malawi Youth League

- 22 Purchased secondhand mini-bus for FC Malawi and departed from Japan
- 25 Educational support project fund delivery ceremony of Mercedes-Benz All Together
- Opening ceremony of 32nd Dream Playground (Daegu House of Hope)
- 28 Archery class event for children with Hyundai Mobis in Yongin
- Hyundai Kefico automotive engineering 1-day camp for education part of social welfare corporation

10 OCTOBER

- 1 Held "Let's Go to School" Malawi writing contest to improve education awareness (-18th)
- 5 Youth Economics Class took part in "Korea Sharing Festival" (-6th)
- KB Rainbow Love Camp economics education
- 7 Opening ceremony of Shinhan Dream Dodamteo X Arumin Library collaboration (Gongju, Chung-nam)
- 8 Final stage camp of economics golden bell of Youth Economics Class (-9th)
- Carried out "Little Picasso" event by Shinhan Card (operated Arumin Library booth)
- Operated the Open Sharing X Flea Market booth of Samsung Card
- 12 Conducted volunteer mural painting activity for High1 scholarship program
- Held final game of FC Malawi Youth League
- 14 Opening ceremony of Shinhan Card Arumin Library (Daegu)
- Opening ceremony of Hyundai Mobis archery class (Suseong Middle School)
- 15 Executives & staff volunteer activity for safe school fences for Mercedes-Benz All Together (Busan)
- Plenary event of "Well of Hope Fund" with AstraZeneca
- 19 "Happy Together" event for SGI Scholarship Fund
- Joint sports day of Adidas My Dream FC (Adidas logistics center in Pyeongtaek)
- 24 Executives & staff volunteer activity for welfare institution residential environment improvement for Mercedes-Benz All Together
- 27 Archery class event for future archers with Hyundai Mobis (-Nov. 17, four classes)
- 28 Moving science class of Toward Hanwha, Toward the Future (Seoul)
- 31 Moving science class of Toward Hanwha, Toward the Future (Daejeon)
- 11 NOVEMBER
- 1 Opening ceremony of SK hynix Hope Nest Study Center in Icheon region
- Moving science class of Toward Hanwha, Toward the Future (Daejeon)
- 6 Moving science class of Toward Hanwha, Toward the Future (Daegu)
- 8 Executives & staff volunteer activity for safe school fences for Mercedes-Benz All Together (Seoul)
- Moving science class of Toward Hanwha, Toward the Future (Daejeon)
- 12 Dongjak-gu Child & Youth Advisory

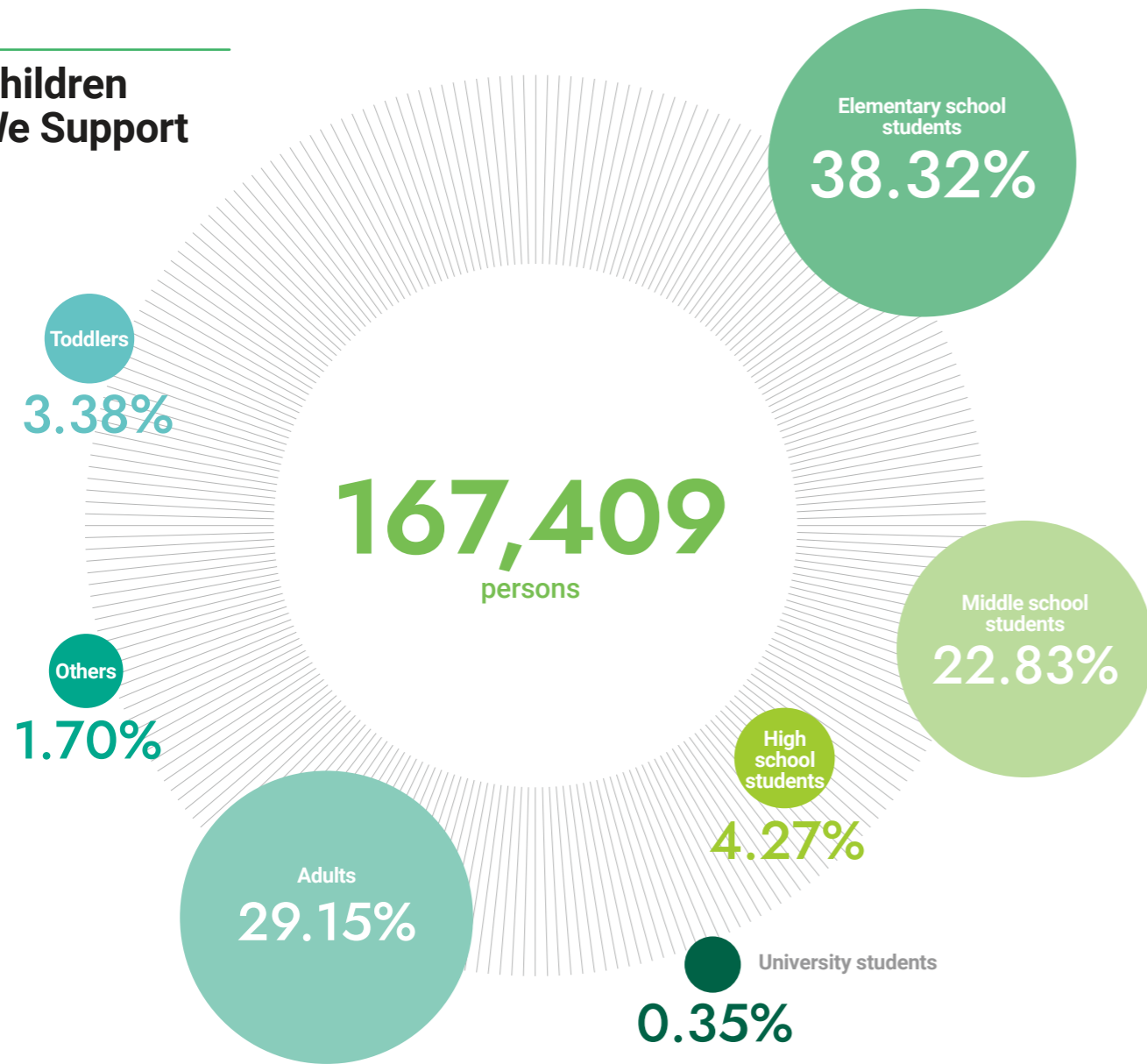
- Deliberation Committee
- Opening ceremony of 33rd Dream Playground (Gwangju Mudeung Social Welfare Center)
- 13 Opening ceremony of Shinhan Card X Lotte Duty Free Arumin Library (two sites in Incheon)
- 14 Opening ceremony of SK hynix Hope Nest Study Center in Cheongju region
- 15 Opening ceremony of Shinhan Financial Group Dream Dodamteo
- 16 Attended the ceremony for "2019 Seoul Social Contribution Award"
- 18 Awarded the grand prize for Lotte Cultureworks sustainable management (video work)
- Moving science class of Toward Hanwha, Toward the Future (Yeosu)
- Held sex education class in Malawi's Salima region through "Let's Go to School" (-30th)
- 19 Completion ceremony of Mikute and Pemba Elementary school classrooms in Salima, Malawi (-20th)
- 22 Closing ceremony of the 10th YAHU Youth Economics Class
- Opening ceremony of Shinhan Dream Dodamteo X Arumin Library collaboration (Yeonggwang, Jeonnam)
- Scholarship award ceremony of Amore Pacific's "Here Goes Makeup & Hair Artist" Executives & staff storytelling volunteer activity "The Echo of the Heart" for Mercedes-Benz All To-gether
- Hyundai AutoEver Smart Car Engineering Class Competition
- 23 Closing ceremony of special lectures for high school by Mercedes-Benz Mobile Academy
- 24 Overseas trip by Kangwon Land High1 Dream Expedition middle school students (-29th)
- 25 Makers' Festival of Samsung C&T Junior Trading Academy (-Dec. 5)
- 30 Joint graduation ceremony of Adidas My Dream FC (Adidas Headquarters)
- Carried out delivery ceremony after the FC Malawi mini-bus arrived in Malawi

12 DECEMBER

- 3 Award ceremony of recognition medal for Shinhan Card's community social contribution
- 6 Executives & staff volunteer activity for Mercedes-Benz All Together Santa Day
- 2nd award of scholarship for Kangwon Land High1 scholarship program
- Supported 600 scholarship recipients through "Let's Go to School" in Salima, Malawi (-27th)
- 12 Opening ceremony of Emart Kids Library (Samcheok)
- 19 Opening ceremony of Shinhan Card Executive & Staff Arumin Library (Hanam)
- 20 Award ceremony for Shinhan Card children's sharing & writing contest
- 21 Closing ceremony of 4th group of supporters of Samsung C&T Junior Construction Academy
- 28 Closing ceremony of Kangwon Land High1 Dream Expedition



Children We Support

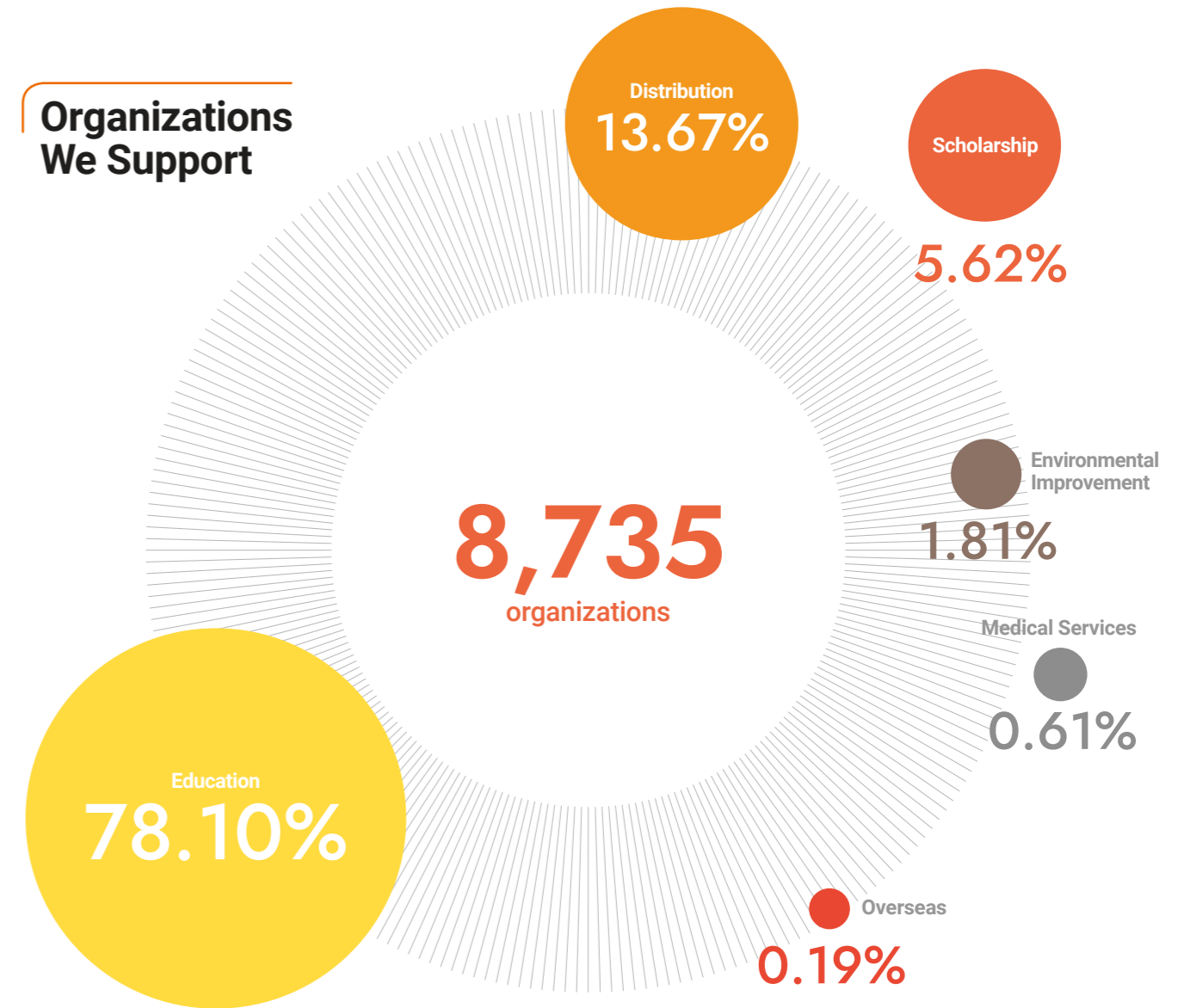


Supported Children by Area (persons)

Distribution	Education	Environmental Improvement	
85,735	40,800	25,774	
Overseas	Scholarship	Medical Services	Commodities
13,813	1,188	99	52

※ The data above is based on the projects listed in the Annual Report. As there are projects that are not listed, there may be a discrepancy between the data herein and the actual data of the whole project range.

Organizations We Support

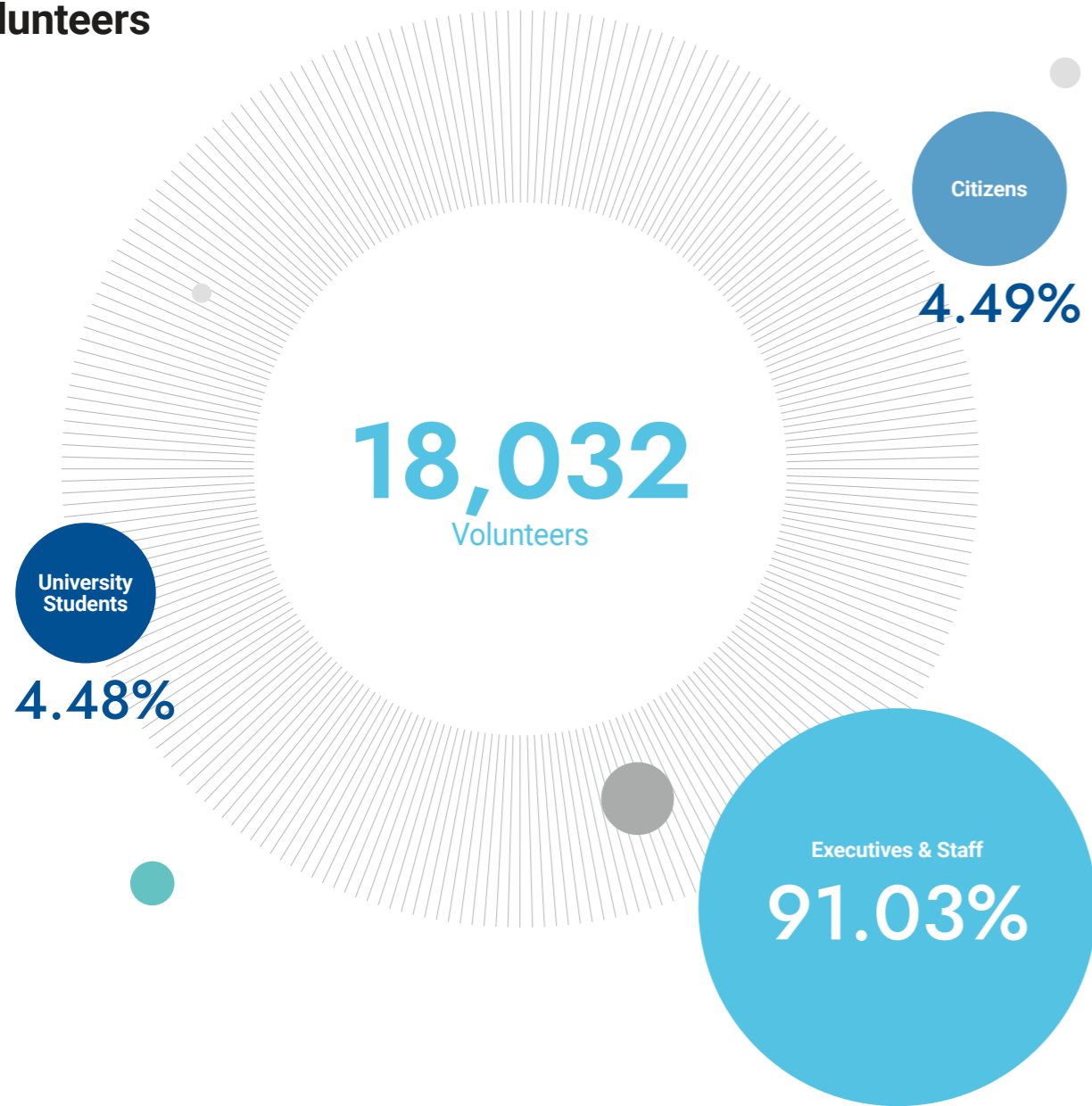


Proportion of Organizational Support (%)

Social welfare facilities	86.07%	Schools	13.93%
Local child centers	14.32%	Elementary school students	3.72%
Comprehensive social welfare facilities	39.14%	Middle school students	5.87%
Childcare facilities	18.03%	High school students	3.26%
Multicultural support facilities	0.55%	University students	0.66%
Youth centers	0.23%	Others	0.41%
Center for Disabled Children's Center	0.64%		
Others	13.15%		

※ The data above is based on the projects listed in the Annual Report. As there are projects that are not listed, there may be a discrepancy between the data herein and the actual data of the whole project range.

Volunteers

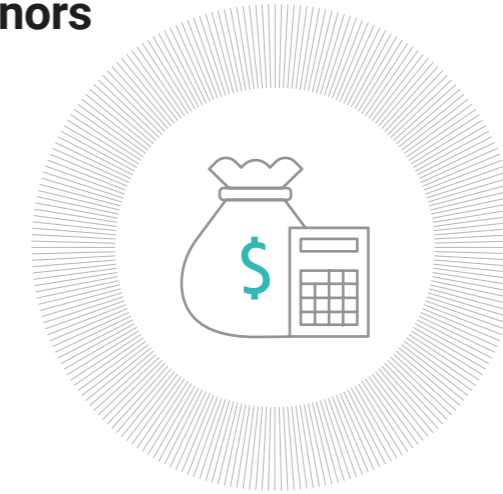


No. of Projects **87**

Corporate Social Responsibility	K&F Campaign Projects	Commodity Support Projects
95.40%	3.45%	1.15%

※ The data above is based on the projects listed in the Annual Report. As there are projects that are not listed, there may be a discrepancy between the data herein and the actual data of the whole project range.

Donating Companies and Individual Donors



Total Donation in 2019
29,415,432,896

Total No. of Individual and Corporate Donors in 2019
29,487

Companies & Organizations	Individuals
Donation from companies & organizations	Individual donations
26,734,877,451	2,680,555,445
No. of corporate and organization donors	No. of individual donors
604	28,883

How to Support K&F

Partnership for Corporate Social Responsibility (CSR)

Our partnerships operate in the process below. For more information, you can contact us through our website, via telephone, or by email. We will get back to you upon reviewing your inquiry.



Designated Donations from Employees and Organizations

There are various convenient ways for business employees and individuals of organizations to donate. For example, contributions can be made by having the donation amount automatically deducted from individuals' monthly salary, through matching grants, or by donating an agreed amount.

Individual Donation

A donation can be made in a fixed amount over a consecutive period of time; a one-time donation is also possible starting at 10,000 KRW. These funds are allotted to our foundation's campaigns such as the K&F Talent Scholarship and FC Malawi.

How to Make a Donation: You can participate by just a few clicks; click on 'Donation' on our website (eng.kidsfuture.or.kr)

Happy Bean Donation: Participation is also possible through Naver's 'Happy Bean Donation' (www.happylog.naver.com/kidsfuture.do)

Direct donation is available via ARS: +82-60-700-1533 or +82-2-843-8478

Deposit can be made to the accounts below

-Shinhan Bank: 100-016-715700

-Kookmin Bank: 813001-04-046748

Donating Goods

You can join our sharing efforts by donating various goods such as school supplies, clothes, and books.

KIDS & FUTURE FOUNDATION 2019 ANNUAL REPORT


Location	Sambo B/D 5F, 272, Sadang-ro, Dongjak-gu, Seoul, 07012, Korea
Tel	82.2.843.8478
Fax	82.2.843.8482
E-mail	kidsfuture@kidsfuture.or.kr
Website	www.kidsfuture.or.kr

The English translation of this 2019 Annual Report was contributed by the volunteer work of Ms. Eun Jin Cho, an English editor currently based in Geneva, Switzerland. (geniegsg02@gmail.com)



20th

KIDS & FUTURE FOUNDATION
2019 ANNUAL REPORT



Sambo B/D 5F, 272, Sadang-ro, Dongjak-gu, Seoul, 07012, Korea
Tel. 82.2.843.8478 Fax 82.2.843.8482 E-mail kidsfuture@kidsfuture.or.kr